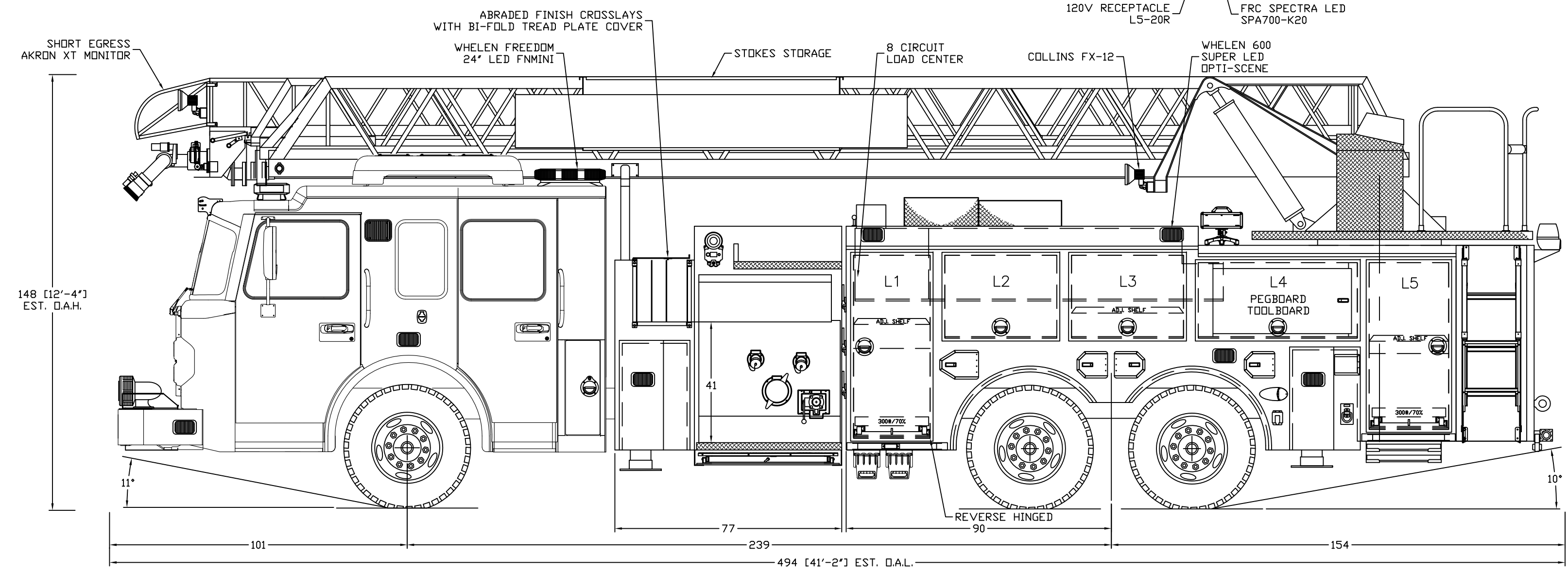
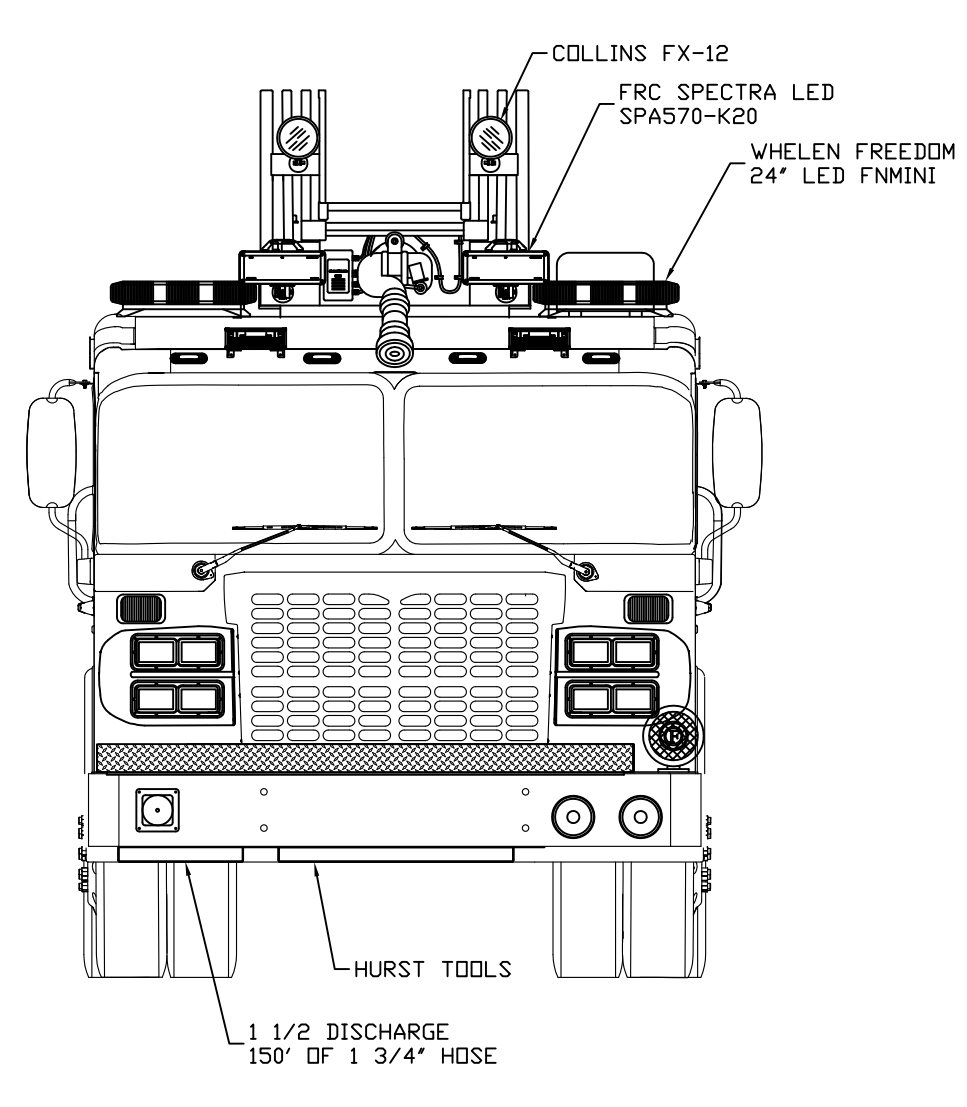
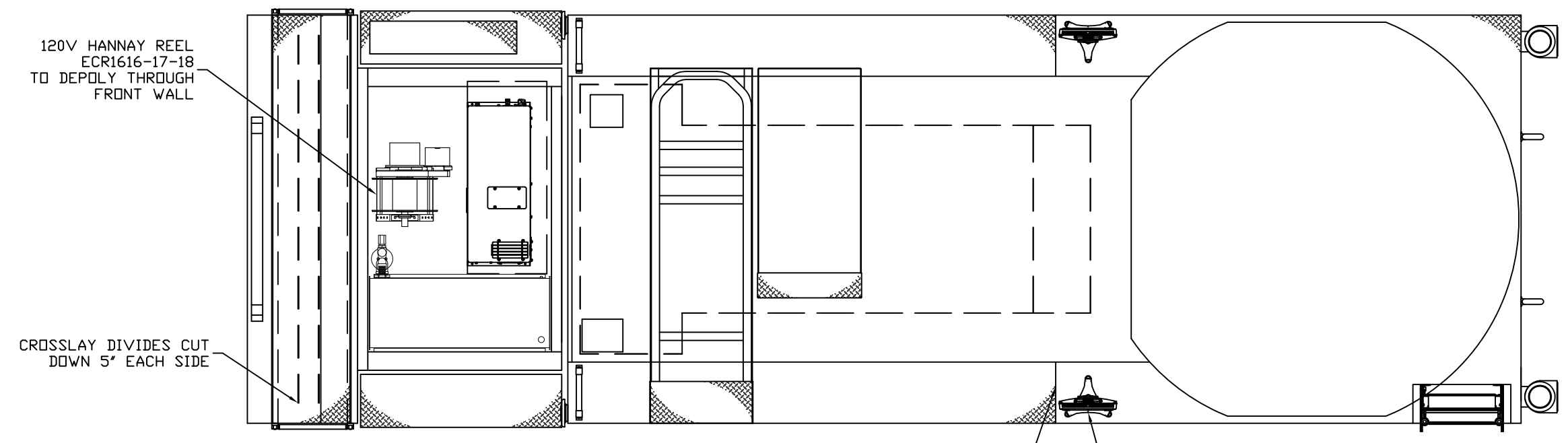


GROUND LADDERS & PIKE POLES			
ITEM	DESCRIPTION	MODEL	QTY
A	35' 3 SEC	PEL3-35	1
B	28' 2 SEC	PEL-28	1
C	16' ROOF	PRL-16	1
D	10' ATTIC	FL-10	1
E	6' PIKE POLE	RH-6	1
F	8' NEW YORK	RH-8	2
G	12' PIKE POLE	YPD-12	2

COMP.	OPENING	UPPER	DEPTH	LOWER
L1	26W x 61H	13	22	
L2/L3	38W x 27H	13	-	
L4	54W x 25H	13	-	
L5	27W x 56H	13	23	
R1	26W x 61H	13	13	
R2/R3	38W x 27H	13	-	
R4	54W x 25H	13	-	
R5	51W x 56H	13	23	
INTERMEDIATE DIVIDE HEIGHT				
L1	30		L5/R5	25



**NOTE:**  
 DIMENSIONS SHOWN ARE APPROXIMATE AND ARE SUBJECT TO CHANGE AS MAY BE FOUND NECESSARY DURING CONSTRUCTION. MINOR DETAILS MAY NOT BE SHOWN.

THE DRAWING IS FOR REFERENCE PURPOSES ONLY. SOME ITEMS MAY OR MAY NOT APPEAR ON THE DRAWING THAT MAY OR MAY NOT BE INCLUDED IN THE SPECIFICATIONS. SPECIFICATIONS SHALL BE THE FINAL AUTHORITY TO BE DETERMINED WHAT IS SUPPLIED ON THE APPARATUS.

CHASSIS: SPARTAN GLADIATOR LFD 5' RAISED ROOF  
 PUMP: HALE QMAX 2000 GPM  
 WATER TANK: 500 GAL  
 FOAM TANK: 20 GAL  
 HOSE LOAD: EHL 800' OF 5" 200' OF 3"/39 CU FT.  
 GENERATOR: ONAN 15kW 15RBA8  
 COMPARTMENTS: 155 CUBIC FEET  
 FIRE TRUCK LEVELING ASSIST  
 AL-11 AERIAL INFORMATION SYSTEM  
 ON-SCENE LED COMPARTMENT LIGHTING

SHOP ORDER

Date	Approval Signatures	Revisions
	DEALER	
	FIRE CHIEF	
	SALES AD.	
	PRODUCTION	
	ENGINEERING	

Revisions
KS REVISED 11/08/13
ML REVISED 01/24/14



SMEAL FIRE APPARATUS SNYDER, NE 68664		
MORRISVILLE, NC 105' AERIAL		
Drawn by:	Scale:	Material:
ML	3/8"=1'	
Chk'd:	Date:	Drawing No.:
	09/18/13	4282
18 x 24 SD		